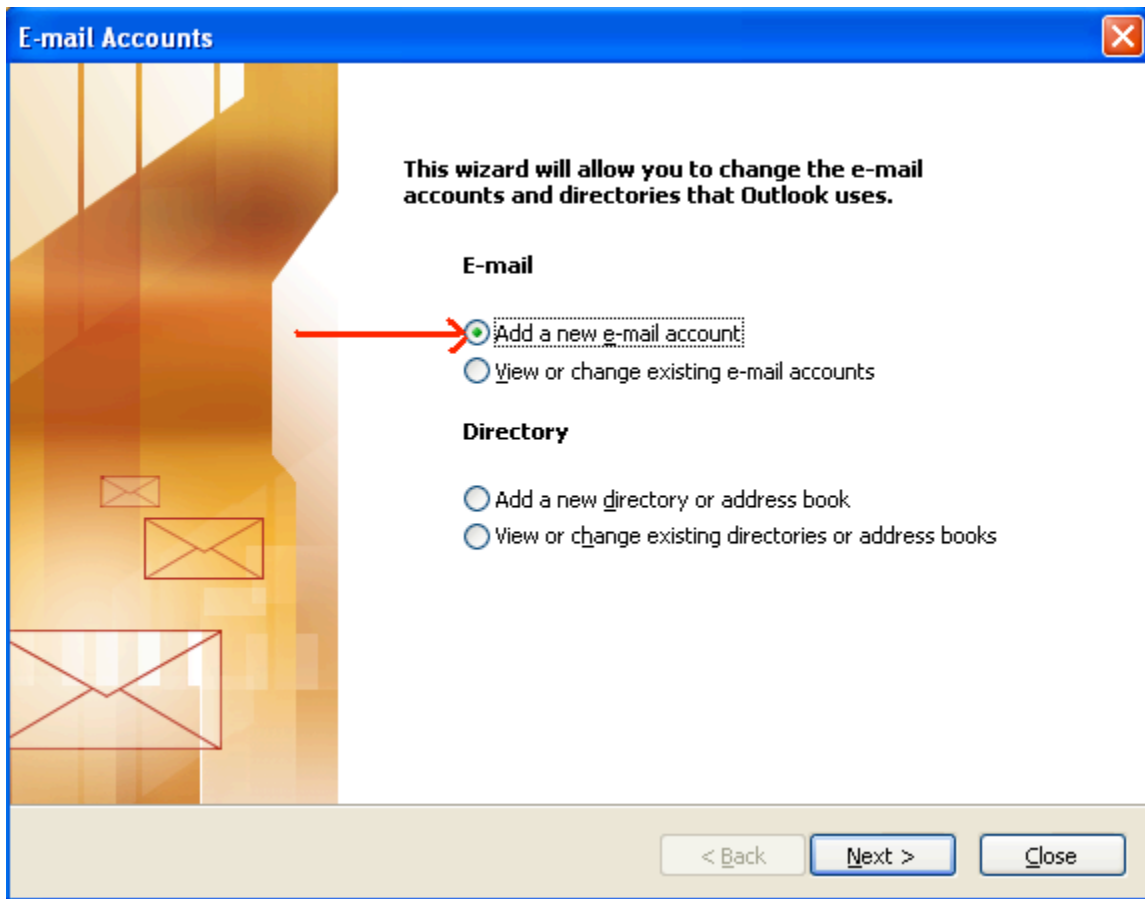
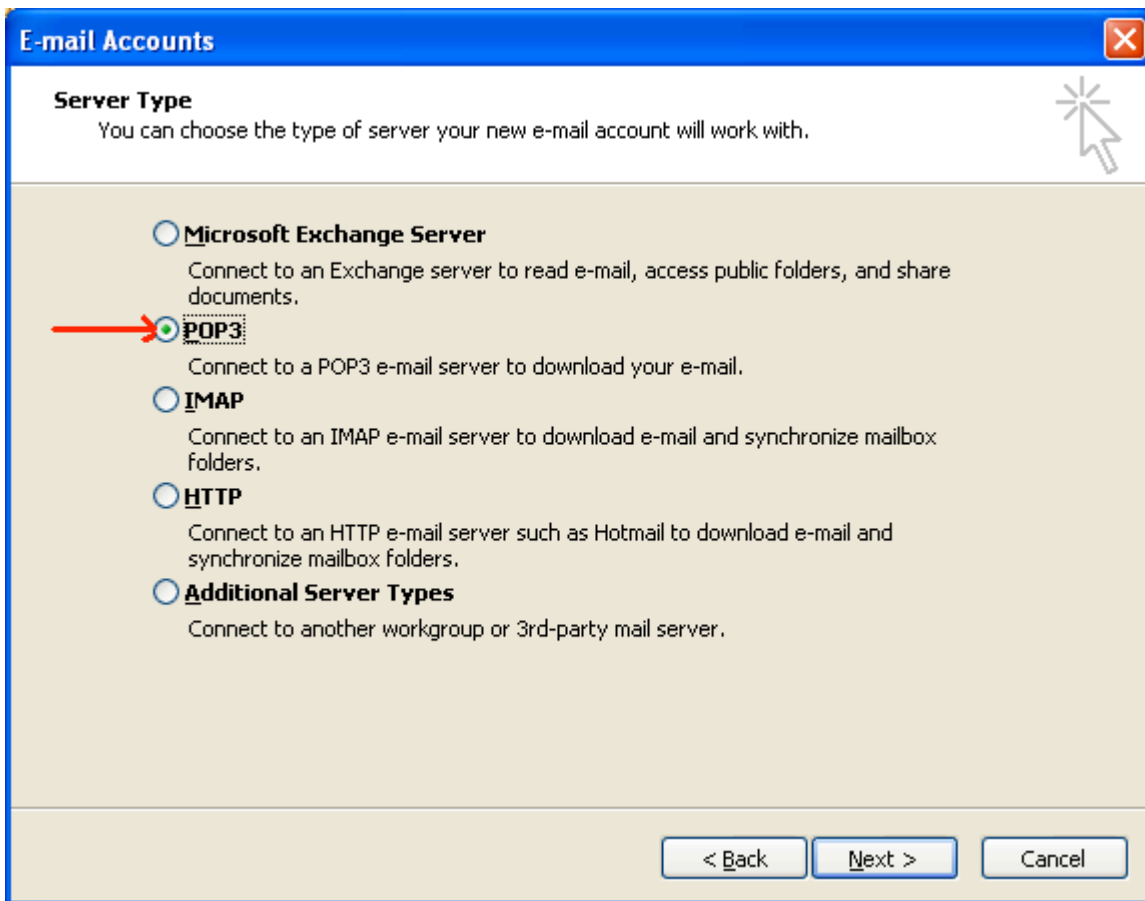


Outlook Email Settings





We do support IMAP, but Pop3 should be used whenever possible. IMAP creates a higher server load on the mail server.

E-mail Accounts [Close]

Internet E-mail Settings (POP3)
Each of these settings are required to get your e-mail account working.

User Information

Your Name:

E-mail Address:

Server Information

Incoming mail server (POP3):

Outgoing mail server (SMTP):

Logon Information

User Name:

Password:

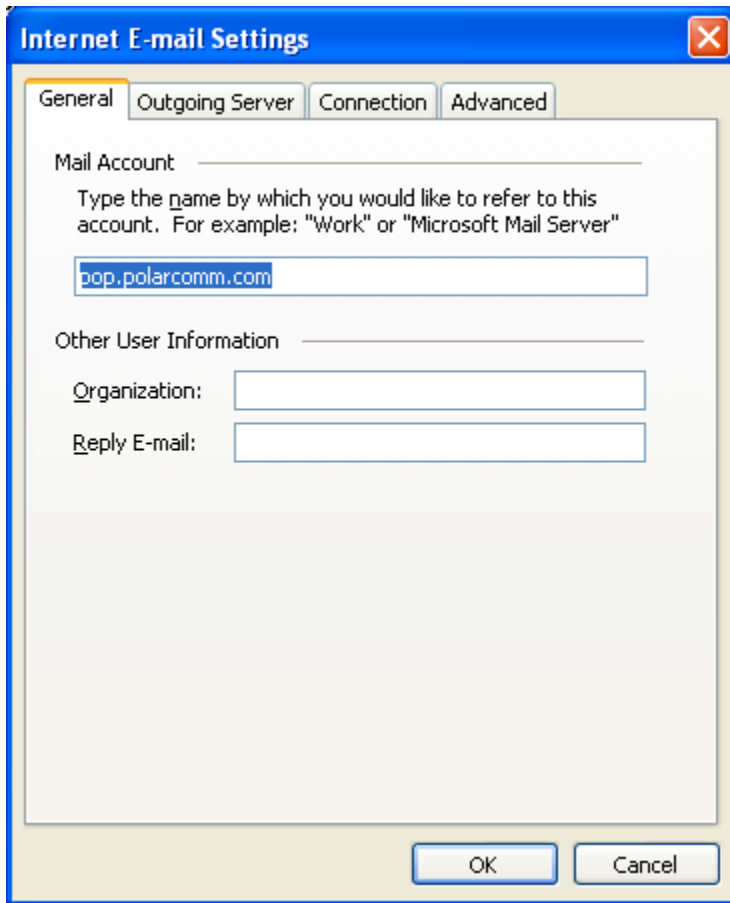
Remember password

Log on using Secure Password Authentication (SPA)

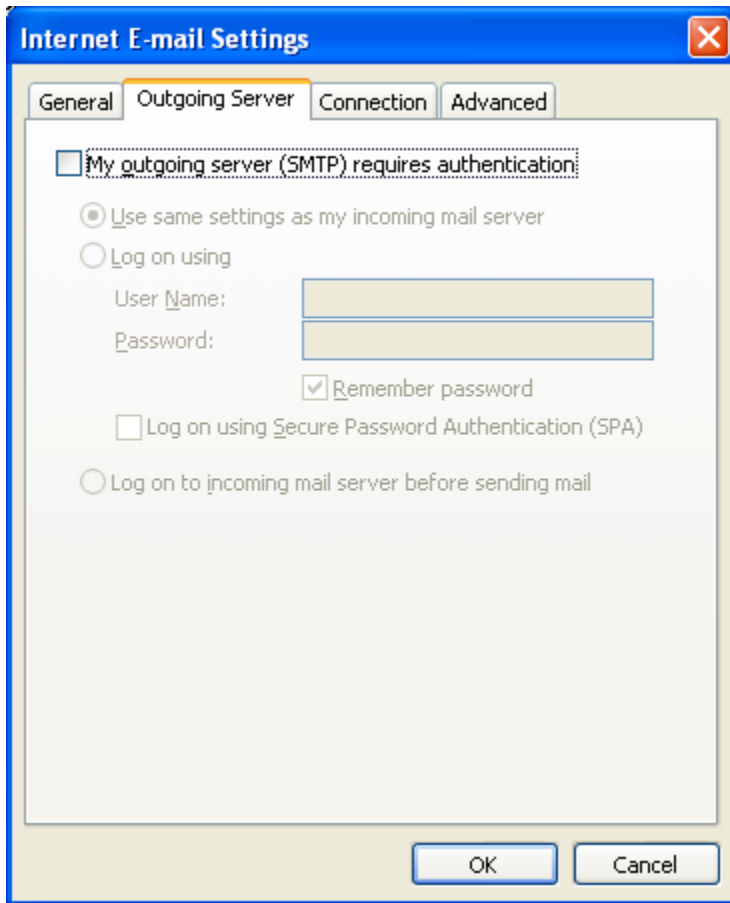
Test Settings

After filling out the information on this screen, we recommend you test your account by clicking the button below. (Requires network connection)

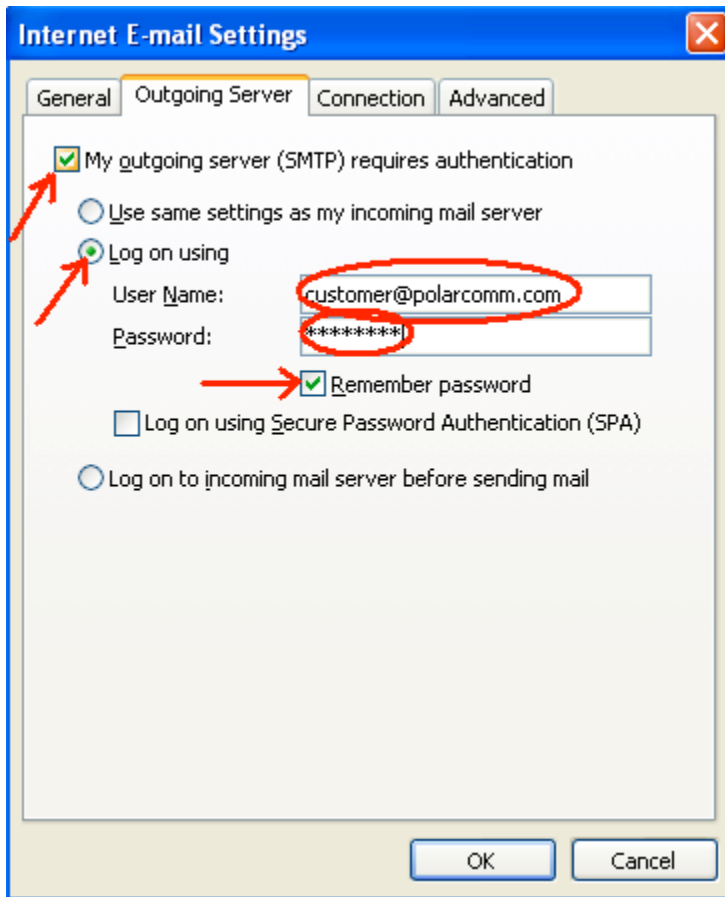
Remember Password is not required but most people like it.



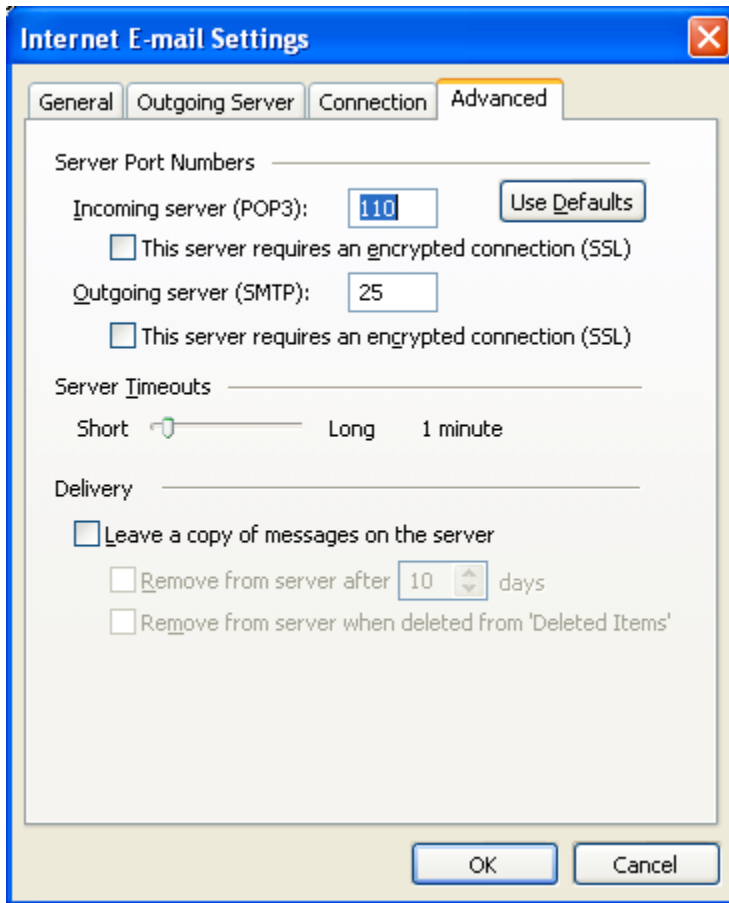
This screen is left default.



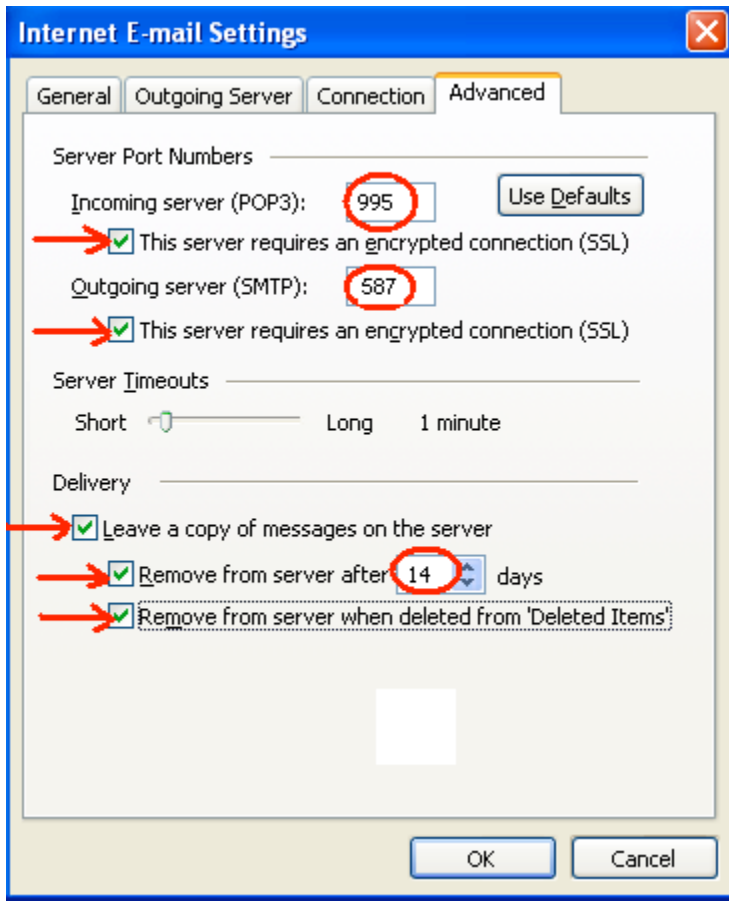
This screen is left default for fixed location computers. Make the following changes for travelling computers.



We require SMTP authentication to send email from foreign (non-Polar) IP addresses. We were forced to implement this to combat spammers and phishers. Some Outlook clients have a problem with "Use same settings". I suggest always specifying the Account name and password.



This screen is left default for fixed location computers. Make the following changes for travelling computers.



Port 587 is supported but not required as an alternative for port 25 for SMTP. Some ISP's block port 25 outgoing to combat spam zombies. Port 587 should work in either case so go ahead and change that.

the secure connection settings are optional. They may be used but are not required.

I strongly recommend setting the "Remove from server" settings if "Leave a copy of message on server" is selected. This will help prevent the mailbox from filling to over quota.

Please also note that Polar Communications has implemented Sender Policy Framework (SPF) to combat phishing. This requires our customers to use our servers for the SMTP (outgoing) server when sending email from PolarComm hosted email domains.
http://www.openspf.org/FAQ/What_is_SPF

-
